

SPÓŁDZIELNIA SOCJALNA

**ZIELONE
ŚLĄSKIE**

Green Guide

How to create green workplaces in NGOs



Authors

Petros Tovmasyan,
Karolina Puszcz,
Adam Łazowski

Composition and graphics

Anton Luzan

Contacts

kontakt@zieloneslaskie.pl
tel +32 579 643 667

Financing



Fundacja Rozwoju Systemu Edukacji



**Co-funded by
the European Union**

Funded by the European Union. Views and opinions expressed are however those of the author(s) only and do not necessarily reflect those of the European Union or the European Education and Culture Executive Agency (EACEA). Neither the European Union nor EACEA can be held responsible for them.

Publisher

Green Silesia Social Cooperative
J. Sieminskiego 22 st., 44-100 Gliwice

Organizers



Project description

The Green Jobs in NGO project was initiated to address the priority of adaptation vocational education and training to the current requirements of the labor market. Currently, the world, including the European Union countries, is struggling with a huge ecological crisis - one of the most serious problems we face. Striving to solve it is necessary is to introduce appropriate, comprehensive actions as part of the European Green Deal, that aim to carry out a green transformation, including in the field of work.

This undertaking is a challenge for employees who need appropriate preparation for transformative ecological activities. Continuous development is also important and implementing these activities into everyday life. The implementation of the “Green Jobs in NGO” project aims to contribute to the implementation of this ecological goal transformation in workplaces, with particular emphasis on the non-governmental organization sector.



Content

05

Introduction

08

Green jobs - what are they?

12

Office space

22

Getting to work

25

Rethinking how you move around inside a building

27

Recycling an important corporate value

35

Renewable energy

44

Greening the workplace

68

Ecological application - Generator

74

Customer Journey Map

78

Conclusion

Introduction

The existing ecological crisis currently represents the most serious problem that the whole world, including the European Union countries, is struggling with. In response to this situation, it is necessary to take effective actions to solve this crisis. In this context, the European Green Deal represents a comprehensive action plan to bring about a green transformation in various spheres of our lives, including the workplaces.



Photo 1. Meeting of the initiative “Green jobs in NGOs”, Padua, Italy 2023

Implementing green transformation in workplaces poses many challenges for employees and employers. It requires adequate preparation for transformational green activities, as well as the ongoing development and sustainable systematization of green principles in everyday life. To make it possible to achieve these goals, the NGO Green Workplaces project was established to contribute to green transformation in workplaces through the development of specific results and initiatives.



Photo 2. Padua, Italy 2023

The green guide presented in this publication is intended to serve as an assistance to employees and employers who wish to engage in green activities in their workplaces. By presenting practical tips, ideas and strategies, this guide is meant to enable green transformation in workplaces and encourage green actions on a daily basis.

In the following sections of this guide, we will discuss various aspects related to creating green workplaces. We will focus on effective resource management, reducing carbon emissions, cutting energy consumption, increasing efficiency in recycling and waste disposal, and promoting environmental awareness among employees.



Photo 3. Padua, Italy 2023

By implementing the recommendations in this guide, employees and employers will be able to make an effective contribution to combating the environmental crisis while achieving economic and social benefits. The future of our planet depends on our actions, and green jobs are an important step toward sustainability.

So let's now move on to discovering ways to make our workplaces greener and more balanced.



Green workplaces – what are they?

A green workplace is a place where environmental awareness is promoted and actions are taken to protect the environment. This can include educating employees about environmental sustainability practices, encouraging the use of public transportation or bicycles, promoting waste separation and recycling, and supporting local ecological initiatives.

A green workplace also often uses technologies and solutions that minimize negative environmental impact. Examples include using renewable energy, installing efficient lighting and electronic devices, reducing paper consumption by digitizing documents, using eco-friendly building materials and equipment, as well as optimizing energy and water consumption by automation and monitoring of systems.



Motivation of employees

Workplace sustainability is critical, and employee involvement in the process plays a key role. Employees should be directed by their leaders to find and achieve the right values that will increase environmental sustainability. One effective way to motivate employees for environmental transformation in the workplace is to expand the position offerings to include those related to the green economy.

First of all, recruiting candidates for specific positions dealing with ecological areas, which will be responsible for controlling and planning activities, can be very fruitful. Such positions can contribute not only to better organization, but also to the restoration of environmental quality. Those in these positions can provide training to other employees, raising awareness of ecology and environmental sustainability in the workplace.

As a company, it is worthwhile to change the thinking of employees and encourage them to apply daily environmental actions. Choosing eco-friendly goals and developing methods to achieve them should involve both employees and CEOs. Environmental behaviors and habits are rooted in personal life and voluntary choices. However, they are more required and subject to supervision in the workplace. Therefore, it is important to focus on how our employees actually act and address behaviors beyond their control.

One way to motivate employees is to offer flexible working hours, allowing them to get to their place of work in peace and

safety. This allows employees to adjust their working hours to fit rush hour, avoiding unnecessary traffic jams and exhaust fumes emitted by other vehicles.

Motivating employees to green transformation in the workplace is key to achieving positive sustainability changes. By initiating environmentally friendly activities, such as flexible working hours and providing green training and education, companies can create awareness and engage employees in the transformation process. The result will be a greener workplace that contributes to environmental protection and sustainable development of society.

Cooleaf - tool that motivates environmental activities

One of the solutions that can help with this task is the Cooleaf motivation platform. As part of our “How to Create Green Workplaces” guide, we’ll look at how Cooleaf can support green behavior and employee motivation.

What is Cooleaf?

Cooleaf is an motivational platform that helps companies reward and mobilize their employees through various initiatives and programs. Cooleaf offers a range of features such as a points system, rewards, challenges and more, which can be customized to meet a company’s specific goals.



How Cooleaf promotes eco-friendly behavior

Cooleaf offers the opportunity to set up green challenges for employees, which can include various activities such as recycling, using public transport or reducing energy consumption. Employees can earn points for participating in these challenges, which they can then exchange for rewards. This gamification of the process can effectively encourage employees to adopt greener practices.



How does Cooleaf support employee motivation?

By recognizing and rewarding employees for their green actions, Cooleaf helps build a culture of sustainability within the company. This, in turn, can increase employee engagement and satisfaction. Additionally, Cooleaf can help employees feel that their actions have a real impact on the environment, which can be a powerful motivator. Cooleaf is an effective tool that can help companies promote sustainable practices and motivate employees.

By doing so, companies can not only contribute to environmental protection, but also build a more engaged and motivated staff. By creating a positive circle in which green actions are recognized and rewarded, companies can successfully achieve their sustainability goals.

Office space

Due to the growing popularity of eco-friendly trends in the construction industry, the use of eco-friendly solutions in office spaces is becoming increasingly visible as well. The origins of many of these trends date back to the 1990s, but they are now gaining importance and interest not only among designers, but also among increasingly conscious office users. This translates directly into their widespread use.



¹The ecological approach is not only about waste segregation, energy conservation or a large number of plants in the environment, but focuses mainly on the human factor, i.e. the well-being of people. All architectural solutions in the interiors of office buildings that improve well-being and thus work efficiency are related to the ecological approach evaluated in the certification process.

The environmental standards thus set are a reference to the determination of ecological trends in office interior design. Many users of office interiors ask themselves what is an ecological office interior, under what conditions can we talk about eco-offices? The definition of an eco office consists of several important factors. Therefore, below you will find factors that have a significant impact on the definition of an eco office.



¹Gabriela Owczarek, Czym jest ekologia we wnętrzach biurowych, <https://www.linkedin.com/pulse/czym-jest-trend-ekologiczny-we-wn%C4%99trzach-biurowych-gabriela-owczarek/?originalSubdomain=pl> [access: 10.07.2023]

Social rooms

Eco-friendly behavior should also be reflected in social spaces such as dining rooms, locker rooms, washrooms and toilets. As a responsible company, we should take conscious actions, integrating them into the daily routine of our organization.

The first step may be the installation of aerators - devices installed in faucets to distribute water away from the faucet, thereby saving water, up to 60%. Such a component can be easily installed in both sinks and washbasins. The aerator, thanks to its ability to adjust the stream, allows you to adjust water consumption to suit your company's needs.

This is a relatively inexpensive way to save, not only in terms of water consumed, but also in terms of the energy needed to heat it and reduce the amount of waste water discharged. Such a solution can be used in bathrooms, kitchens and even showers.

It's also worth considering installing electronic faucets that automatically shut off after a few seconds, preventing unnecessary water flow. It is a good idea to equip toilets with flush toilets that allow you to choose the amount of water flushed.

When choosing accessories for cleaning and hygiene, let's pay attention to eco-friendly products that contain as little toxic chemicals as possible. And don't forget to buy energy-efficient devices, such as refrigerators, dishwashers and coffee makers.



Save water by avoiding washing dishes under running water and starting the dishwasher only when it is full. Prudent planning of food needs for employees, refilling vending machines as needed, and gradually replenishing them is another step to sustainable operation.

Equally important is keeping the water warm with thermoses, which eliminates the need to heat it for each cup of tea or coffee, thereby saving water, electricity or gas.

Taking these steps will make our company an environmentally friendly place that promotes eco-friendly behavior.



Air in the office space

Fortunately, office buildings without open windows are a thing of the past. However, this does not mean that the equipment responsible for the production of fresh air stops playing a key role inside the office. On the contrary, environmental trends are forcing better and more efficient ventilation system solutions. Not only is it becoming more and more important to get enough air suitable for the needs, function and way of working in an efficient, i.e. economical way, but this air has certain parameters.

In the past pandemic year, special attention was paid to the quality of air produced by ventilation systems. Besides the spread of allergens, users were also interested in small particles such as viruses, and as I mentioned at the beginning of the article, user awareness is a very important factor to change.



Practices such as constantly adding workstations to the same room, staying for long periods of time in closed, unventilated rooms, which can affect the ventilation balance of an office, are not an ecological approach for users of these rooms.

Fortunately, awareness in this area is also changing. The solution is to make the approach to the organization of office space more flexible, to analyze the actual functioning and needs of users.

And these are trends that emerged in the 1990s, but are only now gaining importance and real form in the use of office space. There are still many traditionally organized offices where the company's growth upsets the balance of ventilation or old-style facilities do not allow for better air performance.

In this situation, the solution seems to be to turn on the air conditioner when it gets stuffy, but the main problem is the lack of adequate ventilation. Adding plants can help improve this situation, as they have the ability to reverse oxygen consumption through photosynthesis and clean the air of dust and pollutants. Office plants filter the air, cleansing it of harmful organic compounds, while absorbing carbon dioxide and removing oxygen. This is not just the conjecture of crazy environmentalists, but information confirmed experimentally.

Biophilic design is no longer just a fashionable element of office space organization, but an important aspect in the field of architecture. Using all available space for green arrangements consciously affects health, well-being and comfort at work and in life. Biophilic design is about incorporating natural elements into the workplace so that we are surrounded by nature, even if we are confined indoors for most of the day. According to a report by the American Psychological Association, offices with lots of plants increase employee engagement, productivity and well-being.



Natural filtration: How plants can improve office air quality

Arranging your office with real plants is a great way to improve air quality and create a more peaceful and pleasant environment for everyone. Here are some ideas to inspire you: Choose low-maintenance plants that will grow well indoors, such as sansevieria, pothos and zamioculcas. Think through your office's color palette and choose plants that complement it. Hang plants from the ceiling or place them on shelves to save space. Use plants to create a natural division between workstations. Place plants on your desk or work table to add variety to your work environment.



In addition to improving air quality and office aesthetics, plants can also help reduce stress and increase productivity. So go ahead and add some greenery to your work space! You can find plants to decorate your office at local nurseries, online stores or even by propagating plants from cuttings. Here's an extended discussion of the benefits and practical tips for updating your office decor with real plants:

Improved air quality - one of the main benefits of having plants in the office is their ability to improve air quality. Plants naturally filter pollutants and release oxygen through the process of photosynthesis. Some plants, such as sansevieria, pothos and zamioculcas, are known for their air-purifying properties. They help remove toxins such as formaldehyde, benzene and xylene from the air, creating a healthier and more refreshing atmosphere for everyone in the office.



Aesthetics and ambiance - bringing plants to decorate your office adds life and vitality to the space. Look at your office's color palette and choose plants that complement it or add contrasting color. For example, bright flowers such as orchids or spathiphyllums can add a colorful accent, while lush green vegetation such as ferns or palm trees can create a calming and natural atmosphere. By carefully selecting plants that match the aesthetics of your office, you can create a visually appealing and harmonious environment.

Space-saving options - if you have limited floor space, you can still place plants in your office using vertical space. Hang plants from the ceiling with decorative hooks, or place them on shelves or hanging pots on the wall. This will not only add greenery, but also save valuable desk or floor space. Developing plants, such as ivy or climbing succulents, can hang beautifully from hanging containers, creating an attractive decoration.

Natural divisions and privacy - Plants can be used to create natural divisions between workstations, providing a sense of privacy without completely fencing off the space. Tall, dense plants, such as bamboo or large ferns, can be strategically placed to define separate areas and add a hint of privacy while maintaining an open and collaborative office layout. These green partitions can help reduce distractions and create a more focused work environment.

Desk and table decorations - Placing plants on your desk or work table can transform your immediate workspace. Compact plants such as succulents, cacti or small herbs in pots can be placed in decorative containers or terrariums, adding nature and personality to your desk. These plants not only improve aesthetics, but also create a calming and refreshing atmosphere, making your work environment less monotonous and more pleasant.



Reduce stress and increase productivity - numerous studies have shown that introducing plants into the office environment can reduce stress levels and increase productivity. The presence of plants can have a calming effect on individuals, promoting a sense of well-being and relaxation. Studies also indicate that employees in green offices report higher job satisfaction and greater creativity. By creating a green and peaceful work space, you can create a positive work environment that promotes employee well-being and productivity.

When adding plants to your office, pay attention to their care requirements and choose low-maintenance varieties that can flourish indoors with minimal attention. Be aware of lighting conditions and water your plants accordingly. It's also a good idea to educate yourself and your co-workers on basic plant care to ensure plant longevity and health.

Arranging your office with real plants offers many benefits, including improved air quality, enriched aesthetics, reduced stress and increased productivity. By incorporating plants that suit your space and taking proper care of them, you can create a pleasant and inspiring work environment for yourself and your co-workers. So don't hesitate to introduce some greenery into your work space and enjoy the many benefits it brings.



Getting to work

Changing the way you get around by using public transportation, car sharing and walking can bring many benefits to both you as an individual and the community. Here is a more detailed expansion on each of these aspects:

Public transportation:

Financial savings - public transportation is generally more cost-effective than driving a private vehicle. By using buses, trains, streetcars or subways, you can save money on fuel costs, parking fees, tolls, vehicle maintenance and insurance. Over time, these savings can accumulate significantly, giving you additional funds for other priorities.

Environmental benefits - public transportation is an eco-friendly option because it reduces the amount of fuel consumed and emissions emitted into the atmosphere. By choosing public transportation, you contribute to reducing air pollution, greenhouse gas emissions and traffic congestion, which in turn helps alleviate the negative effects of climate change and creates a cleaner and healthier environment for all.

Time management and stress reduction - public transportation allows you to make the most of your travel time. Instead of being stuck behind the wheel in traffic, you can use this time for various activities. You can read books, catch up on work or personal emails, listen to podcasts or audiobooks, or just relax and unwind. This can help reduce stress levels and improve your overall well-being.



Car sharing:

Cost sharing - car sharing involves sharing rides with other people who have a similar route to travel. By sharing the cost of fuel, tolls and parking with other co-passengers, transportation costs can be significantly reduced. This can lead to significant savings in the long run, making it a financially beneficial option.

Reducing traffic congestion - car sharing helps reduce traffic congestion on the roads. Fewer cars on the road, especially during rush hour, improves traffic flow, reducing travel time and frustration for all traffic participants. This not only benefits fellow passengers, but also contributes to more efficient road conditions for the entire community.

Connecting the community - car sharing gives you the opportunity to connect with people in your neighborhood or workplace. Through carpooling, you can have conversations, build friendships and create a sense of community. Car sharing also promotes a spirit of cooperation and a sense of shared responsibility for sustainable transportation options.



Walking:

Health Benefits - walking is a simple and effective way to add physical activity to your daily routine. Walking to work can improve heart health, strengthen muscles, improve mood and reduce the risk of various health conditions. Walking also helps you stay active and energized throughout the day.

Financial savings - walking requires no fuel consumption or transportation costs, making it the most economical way to commute. You don't have to worry about parking fees, public transportation fees or costs associated with vehicle maintenance. In addition, walking protects you from potential costs associated with traffic fines, accidents or parking violations.

Environmentally friendly - walking is an emission-free transportation method. By choosing walking instead of driving, you contribute to reducing air pollution and carbon emissions. Walking is a sustainable option that fits into a green lifestyle and promotes a cleaner and greener environment.

In conclusion, changing your commuting habits by using public transportation, car sharing or walking can bring many benefits. It saves you money in the long run, contributes to a cleaner atmosphere, reduces traffic congestion, improves your well-being and strengthens social ties. These small changes can have a positive impact on both your life and the world around you.

Rethinking how you move around inside a building

Choosing the stairs instead of the elevator is a simple but effective way to include physical activity in your daily routine while reducing energy consumption. Here are the reasons why choosing stairs is beneficial:

Saving energy - elevators use a significant amount of energy to operate, including electricity to power the motor and maintain comfortable conditions inside the elevator cabin. By taking the stairs, you reduce energy demand and contribute to energy saving.

Environmental impact - elevators are powered by electricity, which is often generated from non-renewable energy sources. By using stairs, you indirectly reduce greenhouse gas emissions associated with energy production, helping to alleviate climate change and air pollution.

Physical health benefits - stair climbing is a form of aerobic exercise that provides numerous health benefits. It engages various muscle groups, speeds up the heart rate and improves cardiovascular fitness. Regular stair climbing can help control weight, increase lung capacity, strengthen leg muscles and improve overall fitness levels.

Saving time - in some cases, taking the stairs can be faster than waiting for and using an elevator, especially during rush hour when elevators can be crowded or slow. By using the stairs, you can save time and get to your destination faster.

Stress reduction - physical activity, such as stair climbing, has been proven to reduce stress levels and improve mood. It releases endorphins, also known as “feel-good” hormones, which can help relieve stress and promote mental well-being throughout the workday.

Accessibility for all - although taking the stairs may not be suitable for everyone, promoting the use of stairs encourages people who are physically fit to incorporate more physical activity into their daily lives. For people with mobility limitations, ensuring that elevators are accessible and available is crucial.

To encourage the use of stairs in the workplace:

Display signage - place signs near elevators and stairwells that encourage employees to take the stairs. Consider adding motivational messages about the health and environmental benefits of taking the stairs.

Improve the aesthetics of stairwells - make stairwells more inviting by ensuring proper lighting, cleanliness and well-maintained handrails. Aesthetically pleasing stairwells can encourage employees to choose stairs over elevators.

Provide educational materials - share information with employees about the health benefits of taking the stairs and the energy savings associated with using the stairs. This can help raise awareness and motivate individuals to make healthier and more sustainable choices.

Promote a culture of health and wellness - include stair climbing challenges or events in workplace wellness programs. Recognize and reward employees who actively choose stairs as a means of physical activity.

Focus on safety - regularly inspect stairways to ensure they are in good condition, free of potential dangers and in compliance with building regulations. Provide clear signage and emergency information on stairwells.

By choosing stairs over elevators whenever possible, you contribute to energy conservation, promote physical health, reduce stress and encourage sustainable workplace habits. It's a small step that can have a significant positive impact on both individual well-being and environmental sustainability.

Recycling an important corporate value

Demonstrating that recycling is an integral part of your company's values is critical to developing a sustainable work culture. This can be achieved through a variety of strategies that involve both management and employees. Here are some effective ways to demonstrate that recycling is a core value of your company:

Lead by example - management plays a key role in shaping office culture. Show your commitment to recycling by actively participating in recycling programs and initiatives. Make sure recycling bins are easily accessible and visibly placed throughout the office. When employees see that leaders are consistently recycling, it sends a powerful message that recycling is valued and encouraged.

Communicate Importance - regularly communicate the importance of recycling and its alignment with company values. Use internal communication channels such as company newsletters, intranet or team meetings to share success stories, recycling tips and information about the environmental impact of recycling. This helps raise awareness and reinforce the importance of recycling among employees.



Establish recycling policies - Develop clear and comprehensive recycling policies and guidelines that describe the types of materials that can be recycled, proper sorting procedures and the location of recycling bins. Make sure these policies are easily accessible to all employees, both digitally and on paper. Regularly remind employees of these policies to ensure compliance and encourage active participation.

Provide education and training - offer educational materials and training sessions on best recycling practices. These can include workshops, presentations or speakers who specialize in waste management and recycling. Such initiatives help employees to better understand the benefits of recycling and provide practical tips on how to adopt sustainable practices both in the workplace and at home.

Encourage recycling efforts - show gratitude for employees' efforts to work in accordance with sustainable principles by offering nice prizes, gifts or recognition programs. For example, you can organize recycling contests in which teams or individuals who consistently recycle and contribute to waste reduction are rewarded. This not only motivates employees, but also reinforces the company's commitment to recycling and sustainability.

Employee engagement - encourage employees to actively participate in shaping the company's recycling initiatives and policies. Create channels through which employees can provide feedback, suggestions and ideas for improving recycling practices. If you are an employee, take the initiative and suggest to management to introduce recycling as a company value. Highlight the positive impact this can have on the environment, employee morale and the company's reputation.



The main element of recycling is the introduction of a special waste garbage can. Promoting the use of a recycling garbage can in the workplace is an effective way to promote recycling and reduce waste. Here are some reasons why having such a garbage can and encouraging its use is important:

Reducing landfill waste: By providing a recycling garbage can for the office, you create a convenient and visible option for employees to dispose of recyclable materials. This helps divert waste from landfills and promotes a more sustainable waste management system. Instead of these materials ending up in the trash and ultimately in landfills, they can be recycled and turned into new products, saving resources and reducing the environmental impact associated with waste disposal.

Raising awareness: Placing a recycling garbage can in a frequently used area of the office provides a visual reminder of the importance of recycling. It encourages employees to consider the environmental impact of their actions and encourages them to make conscious decisions. The presence of a recycling garbage can informs people about the priority of recycling in the workplace and prompts employees to think twice before throwing away recyclable items.

Promoting a recycling culture: By spreading the word about the presence of a recycling garbage can in the office, you create a culture that values recycling and encourages participation. When employees see their colleagues actively using the recycling garbage can, it reinforces the norm of recycling and creates a social impact that encourages others to follow. This can lead to greater involvement and a greater sense of environmental responsibility among employees.

Improving recycling rates: Having an easily accessible and convenient recycling garbage can increases the probability that employees will choose to recycle instead of throwing items in the trash. Studies show that the convenience of recycling garbage cans significantly affects recycling behavior. When a recycling garbage can is placed in a visible and accessible location, it makes it easier for employees to adopt the recycling habit. This can lead to higher recycling rates and a significant reduction in waste.

To effectively introduce a recycling garbage can in your office and encourage its use, consider the following tips:

Location of the garbage can: Place the recycling garbage can in a frequently visited area, such as by the copy room or break room, where employees are more likely to notice and use it. Choose a location that is easily accessible and visible to increase its effectiveness.

Clear labeling: Clearly mark the recycling garbage can with placards indicating what materials can be recycled. This helps educate employees about the items they accept and reduces the risk of contamination. Use clear and concise instructions to show employees how to properly separate and prepare items for recycling.

Communication: Inform employees about the presence of the recycling garbage can in the office through emails, posters or team meetings. Emphasize the importance of recycling and encourage employees to use the garbage can. Provide regular recycling reminders and updates to keep awareness high.

Education and training: Provide information and educational materials for employees on recycling practices, including what items can be recycled and how to properly prepare them. Consider holding training sessions or workshops to add to employees' knowledge of recycling and its environmental benefits.

Regular monitoring and maintenance: Empty and maintain the recycling garbage can regularly to prevent overflow and ensure it remains clean and accessible. A well-maintained recycling garbage can sends a positive message about the importance of recycling and creates a pleasant experience for employees.

Having a visible recycling garbage can and actively encouraging its use helps make recycling a seamless and integral part of your work culture. By promoting recycling, you are contributing to a more sustainable and environmentally conscious office, reducing waste and inspiring employees to adopt green habits both at work and in their personal lives.

In summary, actively promoting recycling and integrating it into your company's values creates a work culture that prioritizes sustainability and environmental responsibility. This supports employee engagement, encourages innovative ideas and positions your company as an environmental leader. Management and employees can work together to create a positive environmental impact, promoting a sustainable future.



Recycling after work

Creating a separate area for recycling is an effective way to reduce waste and encourage others to follow this example. Here is an extended discussion of the benefits of having a designated area for recycling and the resources available to support recycling efforts:

Waste Reduction and Recycling - Having a dedicated recycling area in your home or workplace promotes a culture of recycling and waste reduction. Making it convenient and accessible makes you and others more likely to separate recyclable materials from general waste. This simple action can significantly reduce the amount of waste going to landfills and contribute to resource conservation.



Zero Waste Box from TerraCycle - TerraCycle's Zero Waste Box program offers a solution for recycling items that are not accepted in regular streetside recycling programs. It provides specialized boxes for different types of waste, such as coffee capsules, snack wrappers, cosmetics packaging or other difficult to recycle items. Using these boxes, you can collect and send these items to TerraCycle to be properly recycled, ensuring that they stay out of landfills and get a second life.

Zero waste stores and available resources - Zero waste stores, such as The Zero Waste Spot and similar places, offer a wide selection of products and resources to support a zero waste lifestyle. They offer package-free or minimally packaged options for everyday needs such as food, personal care products, cleaning supplies and more. By using these stores, you can reduce packaging waste and support businesses that focus on sustainability and environmental awareness.

A holistic approach to zero waste - it is important to understand that recycling is only one aspect of a wider zero waste philosophy. Zero waste seeks to minimize waste generation by rethinking product design, materials and consumption patterns. It encourages innovative approaches to reduce the volume and toxicity of materials, save resources, and prioritize reuse and recycling over disposal methods such as incineration or land-filling. Adopting a zero waste approach involves adopting sustainable practices such as using durable and reusable products, composting organic waste, minimizing single-use items and actively seeking environmentally friendly alternatives.

By creating a personal recycling space, using specialized recycling programs such as the Zero Waste Box from TerraCycle, exploring zero waste stores and taking a comprehensive approach to zero waste, you can have a significant impact on waste reduction, resource conservation and sustainability. Every step you take contributes to creating a more environmentally conscious and sustainable world for future generations.



Upcycling

Upcycling, the art of creatively repurposing or transforming unused or discarded items into something new and useful, is a pleasant and environmentally friendly practice. It encourages the reuse of products, reducing the need to produce new items, and consequently reducing the amount of waste that would otherwise end up in landfills.

Various social media platforms, such as Pinterest, as well as numerous websites, are excellent sources of inspiration for upcycling projects. These platforms offer countless ideas for transforming everyday objects, such as old jars or other various items, into functional and aesthetically pleasing items.



For example, you can transform an old jar into a personalized flower vase or an elegant candle holder. Random objects, often considered a mess, can gain new life as practical storage solutions or unique decorative pieces. An old ladder can become a stylish bookshelf, and an unused photo frame can serve as an elegant serving tray.

Upcycling not only reduces waste, but also stimulates creativity and personalization. It allows you to create one-of-a-kind pieces that reflect your individual style and taste. It's an invitation to look at the objects around us in a different way, seeing potential and beauty where others may see only trash.

This environmentally conscious habit of reuse and repurposing helps support a culture of sustainability, showing that with a little imagination and creativity we can reduce waste and create unique and useful items in the process. Without a doubt, many office items can get a second life after through another form of use.

Renewable energy

Renewable energy, like solar, wind and geothermal, has many advantages. It is clean, inexhaustible and increasingly cheaper to produce. Using renewable energy can significantly reduce a company's carbon footprint and contribute to its sustainability goals.

How can renewable energy help save money?

Reduced energy costs: Installing photovoltaic panels or other renewable energy sources can significantly reduce traditional electricity consumption, resulting in lower energy bills. In many cases, the energy produced at the office can also be sold to the grid, bringing additional financial benefits.

Taxes and subsidies: Many governments offer various tax breaks, grants or subsidies to companies investing in renewable energy sources. This can significantly reduce the initial investment cost.

Resilience to energy price fluctuations: The use of renewable energy can also protect the company from fluctuations in energy prices in the market. The price of renewable energy is fixed and predictable, allowing for easier budgeting.

Company image: The use of renewable energy can also contribute to a positive image of the company as responsible and environmentally conscious. It can attract new customers, business partners or employees.



In conclusion, renewable energy is not only a key element in the fight against climate change, but also a practical solution for companies that want to cut costs and gain a competitive advantage. It requires some initial investment, but generally translates into significant savings in the long term.

Natural light

Choose natural light whenever possible. If your workplace is blessed with windows, whether there are many or just one large one, take full advantage of them. Using natural light instead of artificial light not only saves energy, but also brings a pleasant, refreshing atmosphere to the room.

Natural light improves mood, boosts morale and increases employee productivity. It offers a spectrum of color temperatures throughout the day - from the warm hues of early dawn to the bright light of midday and the golden glow of sunset - providing a dynamic lighting environment that artificial light simply cannot replicate.



In addition, exposure to daylight is key to maintaining our body's natural diurnal rhythm, leading to improved sleep and overall well-being. From an aesthetic standpoint, natural light can transform a workplace, making it more open and connected to the outside world. It is also inviting to visitors, creating a pleasant and attractive atmosphere.

It is worth noting that maximizing the use of natural light is in line with energy conservation and sustainability goals. By reducing the need for artificial light during the day, we reduce energy consumption and thus reduce our impact on the environment. In conclusion, the use of natural light is not only beneficial to individuals and the working environment, but also to our planet.

Intelligent lighting – a way to save energy

Using lights with motion sensors is a smart and effective way to save energy and increase convenience in the workplace. Here are the benefits of using motion sensor lights:

Energy saving - lights with motion sensors automatically turn on when they detect motion and turn off when the area is empty. This eliminates the need to rely on people to remember to turn off the lights, reducing unnecessary energy consumption. By using motion sensor lights, you save energy and contribute to a more sustainable workplace.

Convenience and ease of use - motion sensor lights provide an intuitive hands-free lighting solution. They eliminate the need for manual operation, allowing workers to focus on their tasks without worrying about turning lights on and off. This convenience is especially appreciated in areas where people move or move objects frequently, as it increases safety and productivity.

Improved lighting control - lights with motion sensors provide better control of lighting conditions in different areas of the workplace. They ensure that lights are active only when needed, providing optimal illumination and minimizing unnecessary energy consumption during periods of inactivity. This can lead to a more comfortable and productive work environment.

Enhanced safety and security - motion sensor lights can contribute to safety and security in the workplace. They automatically illuminate areas when motion is detected, reducing the risk of accidents or tripping in dark areas. Additionally, they can deter potential intruders or unauthorized persons by activating lights in response to unexpected movement.

Cost-effectiveness - while the initial cost of installation may be higher compared to traditional lighting, motion sensor lighting can lead to long-term savings. By reducing energy consumption, they help lower electricity bills and can provide a return on investment over time.

Configurable settings - many motion sensor lights offer configurable settings, allowing you to adjust sensitivity, duration and detection range according to your specific needs. This flexibility ensures that the lights respond appropriately to the movement patterns and requirements of different areas in the workplace.

When implementing motion sensor lights:

Evaluate areas - identify areas in the workplace where motion sensor lights would be most useful, such as hallways, corridors, social rooms or restrooms. Consider traffic flow and typical activity levels in these spaces.

Install strategically - place motion sensor lights in optimal locations to ensure adequate coverage and accurate motion detection. Consult professionals or follow the manufacturer's guidelines for the best placement.

Communicate and educate - inform employees about the use and benefits of motion sensor lights. Explain how the lights work, their purpose in saving energy, and how they increase convenience and safety. Encourage employees to give feedback and report any problems or concerns.

Regular maintenance - perform routine checks to make sure your motion sensor lights are working properly. Replace batteries as needed or schedule maintenance to keep optimal performance.



By using lights with motion sensors, you are creating an energy-efficient workplace while enhancing convenience and safety. The automatic operation of these lights promotes a sustainable mindset among employees and contributes to overall energy-saving efforts.

Energy-saving lamps

Adequate lighting is crucial in any workspace, as it directly affects the productivity, comfort and overall well-being of employees. However, it is important to meet this need in an environmentally friendly way, using energy-efficient lights. Among the various options available on the market, LED bulbs stand out for their numerous benefits over standard bulbs.

LED work lights are easily available and can be easily purchased online or at home improvement stores. These lamps are specifically designed for work environments, providing effective and long-lasting lighting solutions that meet specific office requirements.

In the office environment, LED office lights have become very popular due to their optimal lighting and energy efficiency. They come in various forms, offering versatile solutions for different areas of the office.

Commonly used are LED flat panel luminaires for suspended ceilings, which provide uniform and diffuse lighting for larger areas. LED troffer lights, which are fixtures integrated into the ceiling, offer a modern look and focused illumination. LED spotlights are ideal for illuminating individual workstations or conference rooms. LED fluorescent lamps are often used in traditional fluorescent fixtures, providing energy-efficient alternatives with a longer lifespan.

One of the main advantages of LED lamps is their ability to provide bright illumination while saving energy. LED technology is very energy efficient, using significantly less electricity compared to traditional incandescent or fluorescent bulbs. This leads to reduced electricity consumption and lower electricity bills for the office. Another major advantage of LED lamps is their longer lifespan. LED bulbs can last up to 25 times longer than traditional incandescent bulbs and up to 10 times longer than compact fluorescent lamps.



This extended useful life reduces the need for frequent replacements, which translates into financial savings for the office and reduced waste generation. LED office lamps are often equipped with additional features that increase their functionality and energy efficiency.

Many LED lights offer a brightness adjustment option, allowing you to adjust the level of illumination to suit different tasks and preferences. They can also be compatible with junction boxes, simplifying the installation process. Some LED lamps are designed to bypass chokes, eliminating the need for additional components and further reducing energy consumption. In addition, Energy Star-labeled LED lamps meet specific performance standards, providing additional assurance of their energy savings.

By switching to LED lighting in the office, companies can significantly reduce their energy consumption and carbon footprint. Lower energy consumption not only benefits the environment, but also translates into significant financial savings. The longer life of LED bulbs reduces the frequency of replacements, leading to fewer used bulbs and less waste in landfills.

LED lamps are also a safer and more environmentally friendly choice compared to traditional incandescent bulbs. Unlike fluorescent lights, LED lamps do not contain hazardous substances such as mercury. This eliminates the risks associated with their handling and disposal, making LED lamps a more sustainable lighting choice.

In conclusion, using energy-efficient lamps, especially LED lamps, is a practical and environmentally friendly solution for well-lit workspaces. The energy efficiency, long life and bright illumination of LED lamps make them an ideal choice for offices and other workspaces. By making this simple switch, companies can contribute to a greener and more sustainable future, enjoying the benefits of financial savings and improved lighting quality.



Turn off devices from power

Turning off computers and electronic devices completely instead of putting them into standby mode or using screen savers is a simple but effective way to save energy and reduce electricity consumption.

Here's why it's important to turn off devices when not in use:

Save energy - standby mode and screen savers still consume a significant amount of energy. By completely turning off your computer and electronic devices, you can eliminate unnecessary energy consumption and reduce your carbon footprint. Saving energy helps reduce greenhouse gas emissions and contributes to a more sustainable environment.

Cost savings - Turning off devices when not in use can lead to savings on electricity bills. Standby power consumption, also known as “vampire power” or “phantom load,” can account for a significant portion of energy consumption over time. Turning devices off completely avoids energy waste and saves money in the long run.

Device longevity - switching off devices regularly can also contribute to their longevity. Continuous use, even in standby mode, can cause electronic components to wear out over time. By giving devices a break and letting them cool down completely, you can extend their life and reduce the need for early replacement.

Enhanced security - Turning off devices when not in use can also improve security. Cyber security threats can exploit security vulnerabilities even when a device is in standby mode. By turning off devices, you reduce the risk of unauthorized access, malware attacks and data security breaches.

To effectively implement this practice in your office or workplace, consider the following tips:

If you are an entrepreneur, encourage employees to turn off computers and electronic devices at the end of the work day or when they are not in use for a long period of time.

Provide clear guidelines and reminders about the importance of turning off devices to save energy and promote sustainability. Consider implementing power management settings on computers that automatically turn them off after a period of inactivity. Encourage the use of power strips or smart outlets that can be easily turned off to cut power to multiple devices simultaneously.

Promote an office culture that values energy conservation and responsible use of resources.



Entrepreneur and employee! By getting into the habit of turning off computers and electronic devices completely, you can help save energy, reduce costs, extend the life of equipment and improve safety. It's a small but significant step toward creating a more sustainable and productive workplace.

Greening the workplace

Dryers instead of towels

Use hand dryers instead of paper towels. In most workplaces, hand washing is a frequent activity, resulting in the regular use of paper towels. Unfortunately, this creates a significant amount of waste, contributing to environmental degradation. One realistic alternative is to use hand dryers, which are a hygienic and sustainable replacement for paper towels. These devices use warm

air to dry hands, completely eliminating the need for paper products.

However, there are cases where hand dryers may not be available or practical. In these situations, it is recommended that a recycling garbage can be placed near the paper towel dispenser. This encourages employees to dispose of used towels in a way that promotes recycling, thus ensuring that the paper is reused instead of ending up in a landfill.

Promoting the use of hand dryers or recycling paper towels at work not only shows a commitment to sustainability, but also sets a standard for environmental responsibility. These changes may seem small, but when adopted on a large scale, they can have a significant impact on the health of the planet. Moreover, such initiatives support a culture of sustainability within the organization, inspiring employees to adopt similar practices in other areas of their lives.



Reusable dishes

Using reusable water bottles and cups at work is a simple but influential way to reduce waste, minimize environmental damage, save money and personalize beverage drinking.

Here is an extended discussion of the benefits and practicality of adopting this practice:

Reducing waste - disposable water bottles contribute significantly to the global plastic waste problem. By switching to reusable water bottles, you can help reduce the amount of plastic waste that ends up in landfills, oceans and other natural habitats. Reusable bottles are made of durable materials such as stainless steel, glass or BPA-free plastic that can be reused over a long period of time, greatly reducing the need for disposable bottles.

Environmental Impact - the production, transportation and disposal of disposable water bottles contribute to carbon emissions and other negative environmental impacts. By choosing reusable bottles, you minimize your carbon footprint associated with the production and distribution of disposable bottles. In addition, reusable bottles eliminate the risk of releasing harmful chemicals from plastic bottles into your beverages, protecting both your health and the environment.



Financial savings - investing in a reusable water bottle can allow you to save money in the long run. Instead of regularly buying disposable bottles, you can fill your reusable bottle with tap water, which is usually cheaper and more easily available. Over time, the savings can accumulate, allowing you to allocate funds to other priorities.

Hydration and health - using a reusable water bottle encourages you to stay hydrated throughout the day. By having your bottle always at hand, you can easily reach for water and stay optimally hydrated, which contributes to your overall health and well-being.

Personalizing the experience - bringing your own mug for coffee or other drinks to work adds a personal touch to your daily routine. Using your favorite mug or a stylish, reusable mug allows you to show your personality and preferences. In addition, many coffee shops and cafes are now offering discounts or incentives for customers who bring their own mugs, giving you one more reason to choose reusable options.



Practical tips for using reusable water bottles and cups:

Choose a high-quality, durable water bottle or cup that suits your needs and preferences. Consider factors such as size, material, insulation and ease of cleaning.

Clean your reusable containers regularly to maintain hygiene and prevent odor or taste transfer.

Keep your water bottle or cup in an easily accessible place by placing it in your bag, backpack or at your workstation. This encourages you to use them consistently and reduces the temptation to buy disposable replacements.

Consider investing in a few reusable bottles or cups to accommodate different beverage choices or to have extra in case your friends or colleagues forget theirs.



By using reusable water bottles and cups at work, you actively contribute to reducing waste, minimize environmental impact, save money and add a personal touch to your beverage routine. Adopting this habit not only benefits you individually, but also promotes a more sustainable and eco-friendly work culture.

Lunchbox - minimizing waste generation

Packing your lunch in advance in reusable containers is a simple but influential step toward reducing waste and promoting sustainability.

Here is a more detailed discussion of the benefits and practicality of this practice:

Reducing waste - by bringing your own lunch in reusable containers, you greatly reduce the amount of disposable packaging that accumulates when you buy take-out food. Disposable food containers, plastic bags and cutlery all contribute to landfill waste and can take a long time to break down. By using reusable containers, you help reduce the environmental impact associated with disposable packaging.

Financial savings - packing lunches at home allows you to use ingredients you already have, which can be more economical than buying lunches every day. In addition, reusable containers eliminate the need to constantly purchase disposable packaging, which saves money in the long run.

Health and nutritional values - preparing your own lunch gives you more control over ingredients and portion sizes, allowing you to make healthier choices. You can include a variety of nutritional values, adjust portion sizes to meet your dietary needs, and reduce your reliance on processed or fast food.



Practical tips for packing a zero-waste lunch:

Use reusable containers - invest in durable containers made of materials such as stainless steel, glass or BPA-free plastic. These containers can be reused multiple times, minimizing the need for disposable packaging.

Reusable storage bags - instead of using disposable plastic bags, choose reusable storage bags made of materials such as silicone or fabric. These bags can be washed and reused, reducing waste and saving money.

Consider using a lunchbox - using a lunchbox with compartments will help organize your meal and prevent food from getting squished. Look for options made of eco-friendly materials.

Plan and prepare in advance - carve out some time on the weekend or in the evening to plan and prepare lunch for the week. This saves time and provides you with ready-to-take and eat a variety of options for your morning outing.

Carry reusable cutlery - Don't forget to pack reusable cutlery such as fork, knife and spoon to completely eliminate waste in your lunch. Consider investing in a compact, portable cutlery set that can be easily cleaned and reused.

Properly dispose of waste - if you occasionally buy food and receive disposable packaging, make sure you dispose of it responsibly. Look for recycling garbage cans to properly separate and recycle materials such as plastic, paper and aluminum. Avoid polluting the environment and choose eco-friendly options whenever possible.

Packing lunches in advance in reusable containers allows you to significantly reduce waste, save money and make healthier food choices. Adopting this habit not only benefits you individually, but also contributes to a more sustainable and environmentally conscious lifestyle.



“Zero Waste” catering

In the face of the global climate crisis, more and more companies are trying to meet green standards. One of the easiest ways to promote a green culture in the workplace is to introduce zero waste catering.

What is “Zero Waste” catering?

Zero waste catering is an approach to food service that focuses on minimizing waste by intelligently managing food processes and using resources. It focuses on reduction, reuse, composting and recycling to minimize environmental impact.

Why is Zero Waste catering important?

Currently, food production and distribution are among the largest emitters of greenhouse gases. In addition, a significant amount of food is wasted at various stages of the supply chain. Zero waste catering helps address these problems by reducing waste and using resources efficiently.



How to introduce Zero Waste Catering in the office?

Choosing a Supplier: Choose a catering supplier that takes a waste-conscious approach. They should use seasonal and local products, minimize waste through efficient planning, and provide food in reusable or compostable packaging.

Employee Education: Introduce training for employees on zero waste principles. Show them how they can minimize waste through simple steps such as portioning food, separating waste and composting leftovers.

Recycling and Composting: Install bins for different types of waste to facilitate waste separation. If possible, organize a composting bin on your office grounds.

Planning and Monitoring: Regularly monitor and analyze the amount of waste produced. Make plans to reduce waste and improve efficiency.



Benefits of Zero Waste Catering

Zero waste catering not only helps protect the environment, but also has many benefits for the company. It can improve a company's reputation for environmental responsibility, which is increasingly valued by consumers and employees. It can also save money by reducing costs associated with waste disposal and food purchases.

In conclusion, zero waste catering is a great way to promote green workplaces. It may take some effort and commitment to introduce it in the office, but the benefits to the company and the planet cannot be overstated.



Restriction of printing

Reminders at the bottom of some emails that encourage people to consider whether it is actually necessary to print a document are an important practice to promote environmental awareness in the workplace. These reminders serve as gentle prompts to encourage people to think before printing and consider more environmentally friendly alternatives.

Here are some reasons why these reminders are important:

Reducing paper waste - printing unnecessary documents contributes to paper waste, which has a significant impact on the environment. Trees are the main source of paper, and cutting down forests to produce paper leads to habitat destruction and loss of biodiversity. In addition, paper production requires large amounts of water, energy and chemicals, which contributes to pollution and climate change. By reminding people to think about printing, these reminders help reduce paper consumption and waste. They encourage employees to consider whether a digital version of a document would be sufficient, or whether printing can be avoided altogether. This simple step can help protect forests, conserve resources and reduce the carbon footprint associated with paper production.



Saving resources - printing documents requires not only paper, but also ink or toner. The production of ink and toner cartridges involves the use of fossil fuels, chemicals and water. Encouraging people to think about whether printing is really necessary helps save precious resources and reduce the environmental footprint associated with their production and disposal. Ink and toner cartridges also generate electronic waste during disposal. By minimizing printing, organizations can conserve resources, reduce waste and reduce the environmental impact of ink and toner production.

Promoting digital alternatives - reminders at the bottom of emails also serve as a reminder that digital alternatives can often be just as effective as paper documents. Adopting digital solutions such as emails, cloud storage and electronic signatures can help reduce the need for printing and promote a more sustainable work environment. Electronic documents are easily shared, editable and accessible from anywhere, reducing the need for physical copies. Collaboration through online platforms and document management systems allows for efficient digital workflows. Adopting these digital alternatives allows organizations to save costs, streamline processes and reduce their environmental impact.

Raising awareness - By consistently including these reminders, organizations can raise awareness about the environmental impact of printing and encourage individuals to adopt more environmentally friendly practices. These reminders serve as a gentle reminder that encourages employees to stop and think about whether printing is necessary or whether there are other options available. By building a culture of sustainability and environmental awareness, organizations can affect change on a larger scale. These reminders can trigger conversations and discussions about the importance of reducing paper waste, conserving resources and adopting digital solutions. They contribute to building a sense of responsibility and a concerted effort to create a greener workplace.

Practical tips for sustainable printing practices:

Selectively choose whether the document actually needs to be printed or whether a digital copy will suffice. Choose to print only when necessary or when a specific physical copy is required.

Digital proofreading and editing - use editing tools and software to review and make changes to documents digitally before printing. This reduces the need to print multiple drafts.

Optimize print settings - adjust print settings to minimize paper and ink consumption. Choose options such as duplex printing, lower quality or draft mode for less important documents, and grayscale printing when color is not necessary.

Paper recycling - set up a recycling system to ensure that any paper waste generated is properly recycled. Set up recycling bins or use local recycling programs to responsibly dispose of used paper.



It is worth noting that these reminders are not meant to discourage printing altogether, but rather to encourage people to take an informed approach to printing and consider alternatives when possible. Some documents may still require printing, such as legal or official documents.

However, by thinking before acting and considering more eco-friendly options, such as printing double-sided, using recycled paper or printing only when necessary, we can all contribute to a greener and more sustainable future. These small actions, when multiplied by organizations and individuals, can have a significant positive impact on the environment. By bringing green practices into the workplace, we can contribute to a more sustainable world and inspire others to do the same.

Eco-friendly ink and sans serif font

In the digital age, more and more companies are realizing the need to take care of the environment. Since the workplace is one of the areas that generates a significant amount of waste, a company has a number of options for implementing green practices. Two of these are the use of eco-friendly printing ink and the use of sans serif fonts. Both of these changes can significantly reduce resource consumption and contribute to environmental protection.

Eco-friendly printing ink

Eco-friendly printing ink, also known as organic ink or soy-based ink, is an alternative to traditional petroleum-based inks. Soy-based ink is more environmentally friendly because soy is a renewable source that emits less CO₂ during production. In addition, soy-based ink is biodegradable and does not cause water pollution.

What's more, green ink is as efficient as traditional ink. It can be used in standard printers, and the print quality is comparable to traditional inks.

Sans Serif Fonts

Choosing a font may seem like a small decision, but it actually makes a big difference in ink consumption. Sans serif fonts, such as Arial or Calibri, use less ink than their serif equivalents, such as Times New Roman.

Choosing a sans serif font not only saves ink, but also makes it easier to read on digital screens. Therefore, this simple step can benefit both the environment and employee comfort.



Reusable pens

Use reusable pens. In many work environments, consumption of disposable pens is a common occurrence. This may seem insignificant, but in reality these small, often overlooked items contribute significantly to waste. Most disposable pens are designed for short-term use and are discarded when the ink supply runs out. This not only leads to an increase in waste, but also contributes to a cycle of continuous consumption and disposal that has a detrimental effect on the environment.

Switching to reusable pens is a simple and effective way to break this vicious cycle. Unlike disposable pens, refillable pens are designed to be used for a longer period of time. When your ink supply runs out, instead of throwing away the entire pen, you simply replace the ink cartridge. This practice drastically reduces the amount of waste generated, as fewer pens end up in the landfill.

Moreover, using refillable pens can bring financial benefits. Although the initial investment may be higher compared to disposable pens, the cost of refillable cartridges is generally lower than buying new pens. Over time, this can lead to significant savings.

But the advantages of refillable pens go beyond environmental and financial aspects. Many refillable pens are designed to provide superior writing quality. They often provide better ergonomics, resulting in a more comfortable grip and less strain during longer writing sessions. In addition, they tend to provide smoother ink flow, leading to cleaner and more consistent writing.

Using refillable pens is not just a matter of personal preference or saving money. It's a simple but effective step toward minimizing our environmental impact and promoting sustainability. This seemingly small action reflects a broader commitment to responsible consumption, signaling a shift away from the throwaway culture that characterizes much of modern society.

Regenerated ink

Consider buying regenerated ink. Choosing remanufactured ink is an economical and environmentally friendly choice. These cartridges, essentially recycled versions of the original cartridges, are cleaned, repaired and refilled with new ink by other manufacturers.

Choosing remanufactured ink instead of brand new cartridges has several advantages. First, they are generally more affordable than their new equivalents, making them an excellent option for those looking to reduce office expenses.

In addition, from an environmental perspective, using regenerated ink helps reduce waste and conserve resources. It's an effective way to keep excess metals and plastics - materials often used to make ink cartridges - out of our landfills. It's also worth noting that reconditioned cartridges are usually filled to capacity, which is not always the case with new cartridges. This means you can potentially get more ink for your money.

Remanufacturers of remanufactured ink play a key role in promoting a closed-loop economy - an economic system aimed at eliminating waste and continuously using resources. By supporting these companies, you are contributing to a more sustainable future. That's why investing in remanufactured ink cartridges is not only a smart business move; it's also a responsible environmental choice.



E-cards

Sending e-cards for holidays, special events and birthdays is a great way to take a more eco-friendly approach while expressing your feelings and spreading joy. Here are some reasons why e-cards are a better choice than traditional paper cards and invitations:

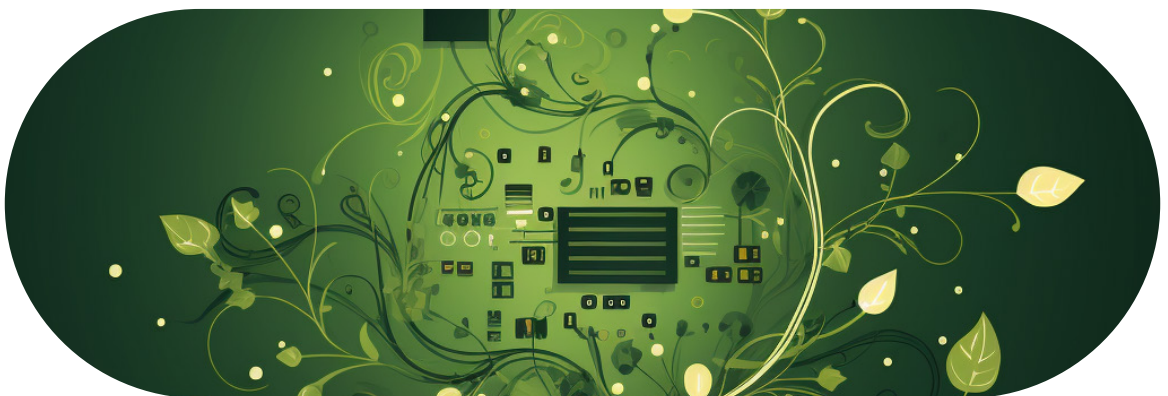
Environmental impact - e-cards significantly reduce the use of paper, which helps protect trees and minimize deforestation. By opting for digital greetings, you are helping to conserve natural resources and contributing to a more sustainable planet.


Cost-effectiveness - sending e-cards is often more cost-effective than buying and sending traditional cards or invitations. With e-cards, you can find a wide selection of free or inexpensive options available online, saving money on printing, shipping and other related expenses.

Interactivity and engagement - e-cards often include interactive elements such as animation, music or games, making the experience more engaging and memorable for recipients. They can bring a sense of fun and playfulness to greetings, increasing the overall effect and enjoyment.

Global reach - with e-cards, you can easily send greetings to friends, family and colleagues around the world without the limitations of distance. This makes it easy to connect with loved ones and share special moments, regardless of their geographic location.

Archiving and sharing - e-cards can be easily archived and stored digitally, allowing recipients to revisit them at any time. They can also be shared with others via social media or email, allowing a wider circle of people to appreciate and celebrate the occasion.





By choosing e-cards over traditional paper cards and invitations, you not only contribute to the protection of the environment, but also benefit from the convenience, versatility and cost-effectiveness that digital greetings offer. It's a thoughtful and environmentally friendly way to celebrate special events and birthdays, while minimizing waste and promoting a more eco-friendly lifestyle.

Electronic marketing materials

Marketing is one of the most important aspects of any business. It allows companies to reach their customers, build a brand and promote their products or services. However, many marketing strategies rely on printed materials, which can have a negative impact on the environment. As part of our “How to Create Green Workplaces” guide, we take a look at electronic marketing materials as a green solution for businesses.

Why use electronic marketing materials?

Saving resources: Electronic marketing materials are paperless, which contributes to forest conservation. In addition, they eliminate the need to transport physical materials, which reduces CO2 emissions.

Greater reach: Electronic marketing materials can be easily shared with a wide audience via the Internet. They can reach audiences around the world without additional costs.

More interactive: Electronic marketing materials can be more interactive and engaging than traditional print materials. They can include links, videos, animations and other elements that capture the attention of the audience.

Ease of updating: Electronic marketing materials can be easily updated and adapted to the changing needs of the company. This does not require additional printing and distribution costs.

Examples of electronic marketing materials:

E-brochures and e-catalogs - digital versions of traditional marketing materials that can be easily shared on a company's website or sent via e-mail.

Email newsletters - regular emails sent to subscribers, containing information about new products, promotions or news from the company.

Social media and content marketing - social media posts, blogs, infographics or videos are also a form of electronic marketing materials that can effectively build brand consciousness.

By switching to electronic marketing materials, companies not only contribute to environmental protection, but can also reach their audience more effectively. It is therefore a win-win for both the company and the environment.



Remote work

Working remotely, or working from home whenever possible, offers several benefits, including convenience, productivity and a significant reduction in the carbon footprint associated with commuting. If your employer does not currently offer remote work as an option, it is worth discussing the possibility. Here's why remote work is a valuable practice and how it helps reduce your carbon footprint:

Reduced commuting emissions: One of the most important advantages of working remotely is the elimination or reduction of daily commuting. By working from home, you avoid the need to drive or take public transportation, resulting in a significant reduction in greenhouse gas emissions from transportation. Fewer vehicles on the road means less air pollution and a smaller carbon footprint.

Time and cost savings: Working remotely eliminates the time and expense involved in commuting to the office. Instead of spending hours in traffic jams or crowded public transportation, you can use that time for work or personal activities. In addition, working remotely saves money on fuel costs, parking fees and other transportation costs, contributing to overall financial savings.

Increased productivity and work-life balance: Many studies have shown that remote work can increase productivity and job satisfaction. Working in a comfortable environment with fewer distractions can lead to improved concentration and productivity. What's more, remote work provides flexibility, allowing you to better balance your work and personal life, resulting in reduced stress levels and a better sense of well-being.

Reduced energy consumption in the office: Remote work not only benefits individuals, but also contributes to reduced energy consumption in office buildings. With fewer employees physically present in the office, energy requirements for lighting, heating, cooling and other facilities are reduced. This results in overall energy savings and less environmental impact.

Increased resilience and continuity: remote work can improve a company's ability to withstand unforeseen events such as bad weather, transportation disruptions or emergencies. When employees can work remotely, the organization can continue its activities with minimal disruption, ensuring continuity and minimizing the negative impact on productivity.



When approaching your boss about working remotely, consider these points:

Highlight potential benefits, such as increased productivity, cost savings and reduced environmental impact.

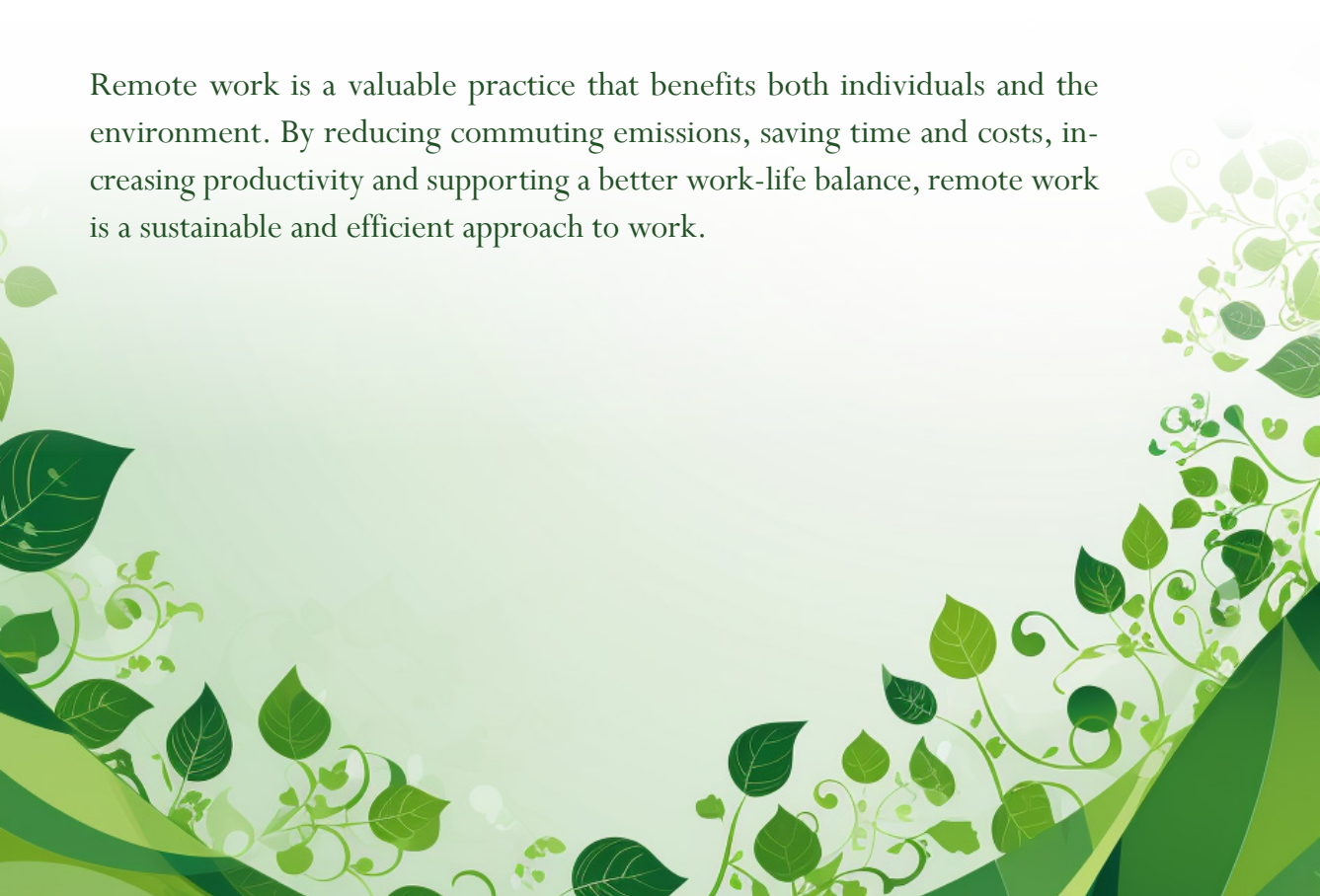
Give examples of successful telework solutions in other organizations or industries.

Offer a trial period or suggest starting remote work from a few days a week to demonstrate feasibility.

Come up with a plan for how you will ensure effective communication, collaboration and responsibility when working remotely.

Highlight the potential positive impact on employee morale, job satisfaction and work-life balance.

Remote work is a valuable practice that benefits both individuals and the environment. By reducing commuting emissions, saving time and costs, increasing productivity and supporting a better work-life balance, remote work is a sustainable and efficient approach to work.



In this part of our green guide aimed at employees and entrepreneurs, we have discussed many important issues concerning ecology and sustainability. Among other things, we have provided practical tips on saving energy, managing waste, using resources more sustainably, and promoting a healthy lifestyle both at work and at home. The purpose of this part of the guide is to show that each of us, regardless of our role in the work environment, can contribute to improving the health of our planet. Every decision we make, even the smallest one, every day can have a huge impact on our environment.

In the next part of our guide, we would like to introduce you to a fascinating project that has been developed as part of the “Green Workplaces” initiative. This is the Ecological Generator, an innovative tool designed to raise environmental awareness among its users.



The Ecological Generator is a dynamic tool that offers personalized solutions for each user. With this tool, which is integrated with artificial intelligence, everyone can find practical and customized advice on how to become greener. Whether you're an entrepreneur looking for ways to green-transform your business, or an employee looking to make green changes to your workplace, Ecological Generator has something for you.

Take a look at this unique tool which shows that environmentalism is not just a global issue, but also a personal one, and that each of us has the power within us to become an ambassador for green change.

Ecological application – Generator

The main goal of the Ecological Generator app is to increase the public's environmental awareness and help users make greener choices. The app uses advanced artificial intelligence to provide personalized, green solutions customized to users' individual needs and preferences. As a result, the app becomes a highly effective tool that has a real impact on changing habits and behavior in a more environmentally friendly direction.

The application seeks to raise environmental awareness by providing users with valuable information, advice and tips on sustainable lifestyles. Using advanced artificial intelligence algorithms, the application analyzes individual user preferences, such as age, transportation, energy and waste consumption, and interests, and then generates personalized suggestions for greener choices in these areas.



Through the application, users can learn what actions and changes in their daily lives can have a positive impact on the environment. The application can recommend alternative products, services and practices that are more environmentally friendly. For example, if a user is a vegetarian, the app can suggest recipes for plant-based meals, as well as inform about the environmental benefits of reducing meat consumption.

As a result, the main goal of the Ecological Generator app is not only to provide information and advice, but also to actively engage users in making conscious green decisions. Through personalized solutions and progress tracking, the app inspires and enables users to continuously improve their environmental impact.

Target Group:

The Ecological Generator app targets both NGO employees who are involved in environmental activities and other users who are interested in changing their habits to more eco-friendly ones. This diversity of target groups gives the app great potential to reach a wide range of users and influence more people, thus contributing to building an ecological community.

For NGO employees, the Ecological Generator app provides a tool to support them in their daily green activities. They can use the app to get personalized information, advice and green solutions that they can apply to their work. As a result, NGO employees can more effectively engage in ecological projects and more effectively achieve the organization's goals.



For other users, the Ecological Generator app acts as a guide and inspiration for making greener choices in daily life. Through personalized advice and suggestions adapted to their preferences, users are able to more easily implement eco-friendly habits. The app provides information on specific actions, such as saving energy, segregating waste, reducing CO2 emissions, and choosing eco-friendly products.

Thanks to its wide reach and adaptation to different audiences, the Ecological Generator app creates an opportunity for integration and cooperation between NGO employees and other users. NGO employees can share their knowledge and experience by providing advice and sharing information from the application.

Finally, the Ecological Generator app not only promotes change at the individual level, but also provides an opportunity to create a strong green community. In this way, the app contributes to promoting the idea of sustainable development, building environmental awareness and supporting large-scale environmental protection efforts.



What the application is designed for:

For NGO employees - the Ecological Generator application is an invaluable tool for NGO employees who are involved in environmental activities. This advanced application provides them with the necessary functions and capabilities that allow them to effectively manage environmental campaigns and projects.

NGO employees can use the application to plan and implement environmental campaigns. The app enables them to source personalized messages, tips and challenges that are tailored to specific audiences and their needs. In this way, NGO employees can deliver valuable and targeted content that inspires and informs the community about the benefits of ecological choices.

The Ecological Generator application also provides an opportunity to engage local communities. NGO employees can use the app for local initiatives, events on ecological activities. This allows them to build strong relationships with local communities, raise awareness and mobilize people to take action.

The Ecological Generator app is not only a work tool, but also a platform for community building and experience sharing. NGO employees can use the app to share knowledge, inspiration and best practices with other organizations and users. This encourages cooperation between the NGO sector and local communities, which contributes to greater impact of environmental activities.

As a result, the Ecological Generator app becomes an indispensable tool, enabling them to effectively introduce the tool to ecological campaigns, engage communities and encourage green progress. This advanced application not only provides information, but also inspires and supports environmental action, enabling NGOs to achieve greater results.

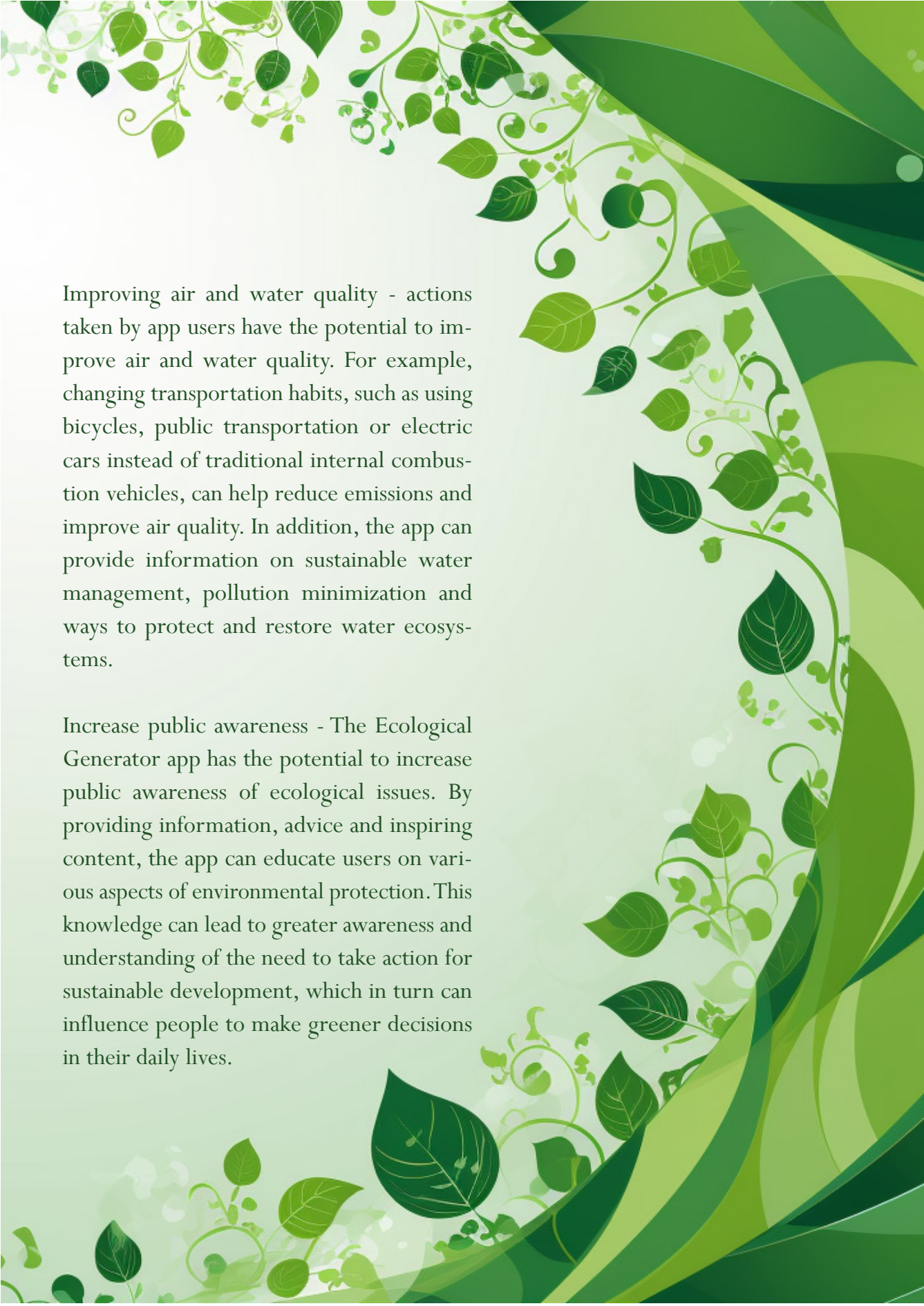
The application is designed to be accessible to everyone. The interface is intuitive and easy to use, so even people without much technical knowledge can use it. The app is available both on the website and on mobile devices, making it convenient and accessible anytime, anywhere. The app can be downloaded from the Google Store in both IOS and Android versions, you can find it under the name AI ECO GENERATOR.

Expected effects of using the application:



Reduction of CO₂ emissions - one of the main effects of using the Green Generator application is the reduction of CO₂ emissions. By changing habits and implementing green practices, users can reduce their carbon footprints and contribute to reducing climate change. This can include reducing energy consumption, choosing lower-emission modes of transportation, and reducing the consumption of raw materials and waste.

Protecting biodiversity - The Green Generator app promotes a sustainable approach to economy and consumption, which contributes to the protection of biodiversity. By changing to more eco-friendly habits, users can reduce their negative impact on the environment. Reducing deforestation, sustainably managing natural resources and supporting ecological farming practices are just a few examples that can help preserve the diversity of ecosystems and species.



Improving air and water quality - actions taken by app users have the potential to improve air and water quality. For example, changing transportation habits, such as using bicycles, public transportation or electric cars instead of traditional internal combustion vehicles, can help reduce emissions and improve air quality. In addition, the app can provide information on sustainable water management, pollution minimization and ways to protect and restore water ecosystems.

Increase public awareness - The Ecological Generator app has the potential to increase public awareness of ecological issues. By providing information, advice and inspiring content, the app can educate users on various aspects of environmental protection. This knowledge can lead to greater awareness and understanding of the need to take action for sustainable development, which in turn can influence people to make greener decisions in their daily lives.

Customer Journey Map:

CJM is a tool that is used to plan and visualize the interaction between the user and the application.

The planned Customer Journey for the Ecological Generator application is expected to be as follows:

🌀 Information about the app – the user learns about the app through information on the media social media or through other information channels.

🌀 Research – the user determines whether the application is suitable for their educational goals and interests.

🌀 Registration – the user creates an account in the application.

🌀 Onboarding – the user creates his profile, familiarizes himself with the elements of the application and answers a few questions about his own lifestyle.

🌀 Personalization – through the responses received from the user, the application adapts to the user's needs. As a result, the generator provides users with personalized content and green tips.

🌀 Education – the user, through the generated personalized advice, raises their environmental awareness, educates themselves about ecology and environmental protection.

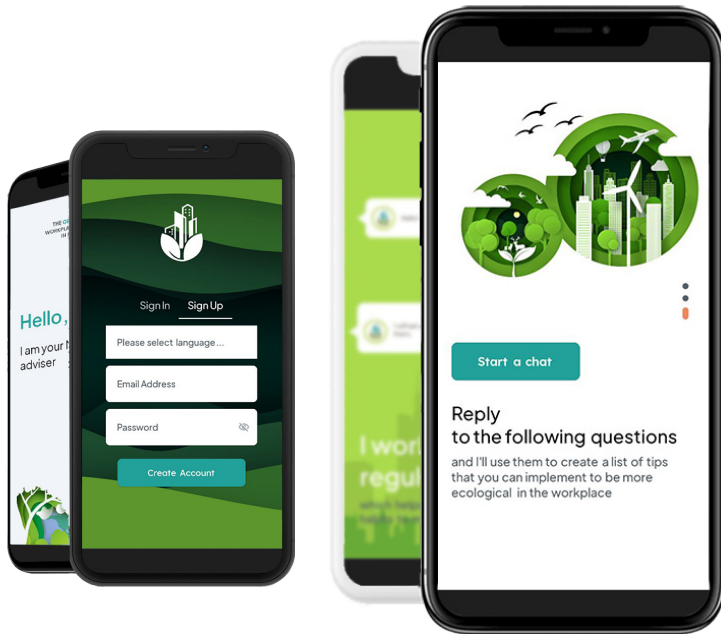


How to use the application?:

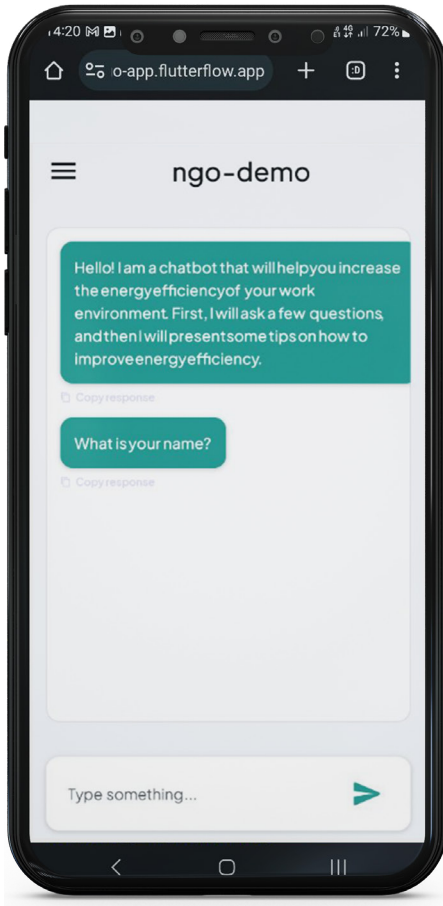
Registration and Login: The first step of the user is to register and create an account in the application after providing an email and password. The registration process should be simple and intuitive, allowing the user to enter basic information and language preferences.

After logging in in the browser via the link <https://ngo-app.flutterflow.app/> or the AI ECO GENERATOR application downloaded from the Google Store, the user sees a welcome screen and brief information on what the application is and how it works.

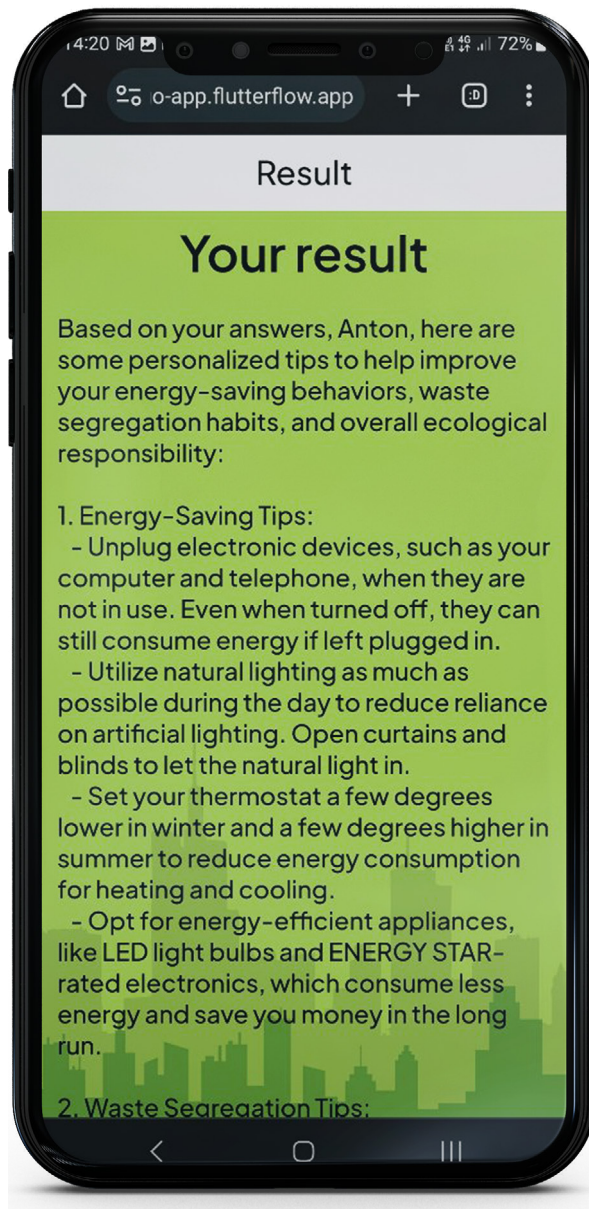
AI ECO GENERATOR



Environmental preferences: After logging in, the user answers a pair of questions exploring their lifestyle. With this, the app can generate personalized solutions and deliver content related to the user's preferences.



Generating green solutions: Based on user responses, the app analyzes data and generates personalized tips and solutions. These can include specific actions, habit changes, or information on eco-friendly products.



Advice and information: The application provides the user with advice, information and news in the field of ecology. This content can be delivered in the short form.

As each of these points is developed, the methodology provides more detailed information about the Ecological Generator

application. From the description of the application and its purpose, to the benefits for different user groups, the effects of using the application and how to use it, the methodology aims to provide a comprehensive understanding of the application's functioning and potential.

Conclusion

Taking care of the environment is extremely important for the future of our planet. The Guide and Generator aim to increase environmental awareness in users and readers. We hope that this information contained in it and the Generator's advice will contribute to a greater concern for the environment. Together we can make positive changes, protecting our planet for future generations.

Together We Create an Eco-Future!

